
---, ---
---, --- ---
Comment: ---

Operator: WELCOM
Order number: ---

Aperture: 5 mil, 0.127 mm
Wavelength: 660/45° Q
Lens: Pentax 35mm
Unit: Micrometer[μm]
Date: 7/1/2013 3:05:35 PM
Device: REA MLV-2D (V.1.0.16.0/11923r)
Serial Number: 0030.025.100-00833-7

Symbology: 2/5 INT
Code Content: 9876543210

User comment:
[Customer device](#)
[Ser.no.calibration card:497](#)

Evaluation: ISO/IEC 15416, ISO/IEC 16390

Symbol: Pass 4.0/05/660/45° Q

Selected grade: 2.5 (B)
SRP grade: 4.0 (A)

Decode:				4
Symbol contrast:	86%	min 55%		4
Edge Contrast:	70%	min 15%		4
Modulation:	81%	min 60%		4
Rmin/Rmax:	4%	max 50%		4
Defects:	5%	max 20%		4
Decodability:	91%	min 50%		4
Bar deviation:	-5%			

Optional Parameters

PCS(SC):	0.95	min 0.75		4
Bright value(Rmax):	90%	min 25%		4
Dark value(Rmin):	4%	max 45%		4
PCS(EcMin):	0.91	min 0.75		4
Bright value(Rs):	76%	min 25%		4
Dark value(Rb):	6%	max 38%		4
Bar:	-30%	-10%	-100%/+100%	4
Space:	5%	30%	-100%/+100%	4
P-Value:	-15%	0%	-100%/+100%	4
Mean:		-18%	-100%/+100%	4
Z-Module:		252		
Ratio:	2.480		2.000/3.000	4
CPI:	12.700			

 ---, ---
 ---, --- ---
 Comment: ---

Operator: WELCOM
 Order number: ---
 Aperture: 5 mil, 0.127 mm
 Wavelength: 660/45° Q
 Lens: Pentax 35mm
 Unit: Micrometer[μm]
 Date: 7/1/2013 3:05:35 PM
 Device: REA MLV-2D (V.1.0.16.0/11923r)
 Serial Number: 0030.025.100-00833-7

Detailed evaluation:
 B = Bar, S = Space, E = Bar + Space
 C = Char, CS = Char set, SCV = Value
 P = P-value, V = Decodability[%]

	B S P	B S V	B S CS	B S SCV	B S
	-25%	-15%			
	10%				
	-15%	96%		10	
	-20%	-25%	-25%	-20%	-30%
98	15%	20%	25%	25%	30%
	-5%	94%		98	
	-25%	-25%	-15%	-15%	-20%
76	30%	10%	20%	15%	30%
	0%	92%		76	
	-20%	-25%	-15%	-10%	-20%
54	20%	20%	5%	15%	25%
	0%	91%		54	
	-10%	-15%	-15%	-20%	-20%
32	15%	20%	20%	15%	10%
	0%	92%		32	
	-10%	-15%	-15%	-20%	-20%
10	10%	15%	15%	20%	10%
	0%	93%		10	
	-15%	-25%			
	25%				
	-10%	96%		11	

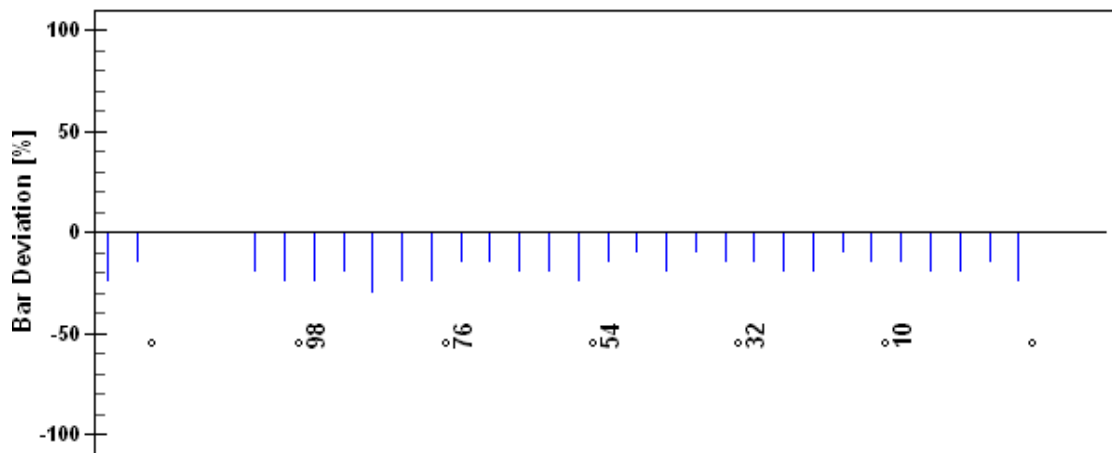
Table of codewords

10	9	8	7	6	5	4	3	2	1	0	11
Start	9	8	7	6	5	4	3	2	1	0	Stop

---, ---
---, --- ---
Comment: ---

Operator: WELCOM
Order number: ---
Aperture: 5 mil, 0.127 mm
Wavelength: 660/45° Q
Lens: Pentax 35mm
Unit: Micrometer[μ m]
Date: 7/1/2013 3:05:35 PM
Device: REA MLV-2D (V.1.0.16.0/11923r)
Serial Number: 0030.025.100-00833-7

Histogram:



---, ---
---, --- ---
Comment: ---

Operator: WELCOM
Order number: ---
Aperture: 5 mil, 0.127 mm
Wavelength: 660/45° Q
Lens: Pentax 35mm
Unit: Micrometer[μ m]
Date: 7/1/2013 3:05:35 PM
Device: REA MLV-2D (V.1.0.16.0/11923r)
Serial Number: 0030.025.100-00833-7

Barcode reflectance profile:

