
 ---, ---
 ---, --- ---
 Comment: ---

Operator: WELCOM
 Order number: ---
 Aperture: 4 mil, 0.102 mm
 Wavelength: 660/45° Q
 Lens: Pentax 35mm
 Unit: Micrometer[μm]
 Date: 7/1/2013 2:48:23 PM
 Device: REA MLV-2D (V.1.0.16.0/11923r)
 Serial Number: 0030.025.100-00833-7

Symbology: EAN-13
Code Content: 4901372301091

User comment:
 Customer device
 Ser.no.calibration card:497

Evaluation: ISO/IEC 15416, ISO/IEC 15420

Measurement: 1. Measurement of 3

Symbol: Pass 4.0/04/660/45° Q

Selected grade: 2.5 (B)
 SRP grade: 4.0 (A)

Decode:			4
Symbol contrast:	85%	min 55%	4
Edge Contrast:	70%	min 15%	4
Modulation:	82%	min 60%	4
Rmin/Rmax:	3%	max 50%	4
Defects:	7%	max 20%	4
Decodability:	78%	min 50%	4

Bar deviation: -4%

Optional Parameters

PCS(SC):	0.96	min 0.75	4	
Bright value(Rmax):	88%	min 25%	4	
Dark value(Rmin):	3%	max 44%	4	
PCS(ECMin):	0.88	min 0.75	4	
Bright value(Rs):	80%	min 25%	4	
Dark value(Rb):	10%	max 40%	4	
Bar:	-45%	0%	-100%/+100%	4
Space:	-10%	50%	-100%/+100%	4
E-Value:	-75%	45%	-100%/+100%	4
P-Value:	-65%	25%	-100%/+100%	4
Mean:	-15%		-100%/+100%	4
Z-Module:	330	264/660	4	
Size:	100% SC 2	80%/200%		
MF:	1.000	0.800/2.000		
CPI:	11.000			

 ---, ---
 ---, --- ---
 Comment: ---

Operator: WELCOM
 Order number: ---
 Aperture: 4 mil, 0.102 mm
 Wavelength: 660/45° Q
 Lens: Pentax 35mm
 Unit: Micrometer[μm]
 Date: 7/1/2013 2:48:23 PM
 Device: REA MLV-2D (V.1.0.16.0/11923r)
 Serial Number: 0030.025.100-00833-7

Detailed evaluation:
 B = Bar, S = Space, E = Bar + Space
 C = Char, CS = Char set, SCV = Value
 P = P-value, V = Decodability[%]

C	B S E P	B S E V1	B S E V2	E CS	SCV
	-25%	-15%			
		15%			
		-5%			
	-30%	97%			30
9	-15%	-15%			
	0%	15%			
		-30%	0%		
	-15%	95%		A	9
0	-15%	-20%			
	10%	10%			
		-15%	-15%		
	-20%	97%		B	0
1	-10%	-15%			
	15%	10%			
		5%	0%		
	0%	97%	95%	A	1
3	-10%	-20%			
	15%	20%			
		10%	20%		
	5%	97%		A	3
7	-20%	-10%			
	15%	15%			
		-5%	-5%		
	5%	96%	96%	B	7
	-5%	-5%			
	20%	10%			
		30%	15%		

 ---, ---
 ---, --- ---
 Comment: ---

Operator: WELCOM
 Order number: ---
 Aperture: 4 mil, 0.102 mm
 Wavelength: 660/45° Q
 Lens: Pentax 35mm
 Unit: Micrometer[μm]
 Date: 7/1/2013 2:48:23 PM
 Device: REA MLV-2D (V.1.0.16.0/11923r)
 Serial Number: 0030.025.100-00833-7

2	25%	99%	100%	B	2
	-5%	0%			
	5%	-10%	10%		
	5%	-25%	-15%	25%	
	5%	88%	89%		31
	-10%	-15%			
		25%	15%		
		15%	-10%		
3	10%	97%		C	3
	-5%	-15%			
		15%	0%		
		0%	-30%		
0	-5%	93%		C	0
	-10%	-10%			
		10%	15%		
		0%	10%		
1	10%	95%	100%	C	1
	-15%	-20%			
		20%	15%		
		-5%	-15%		
0	0%	97%		C	0
	-20%	-20%			
		5%	10%		
		-30%	-20%		
9	-25%	96%		C	9
	-25%	-30%			
		15%	50%		
		-35%	45%		
1	10%	85%	94%	C	1
	-45%	-25%			
		10%			
	-75%				
	-65%	78%			30

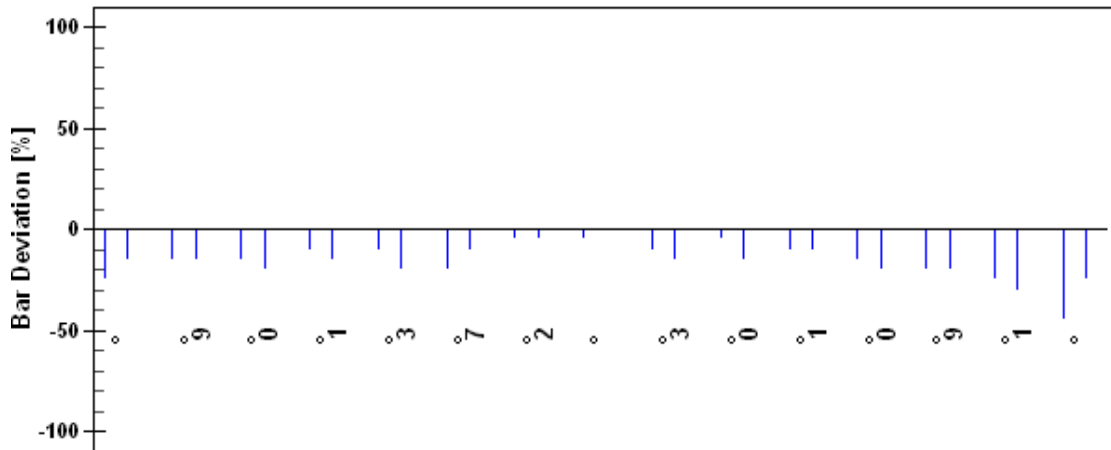
 ---, ---
 ---, --- ---
 Comment: ---

Operator: WELCOM
 Order number: ---
 Aperture: 4 mil, 0.102 mm
 Wavelength: 660/45° Q
 Lens: Pentax 35mm
 Unit: Micrometer[μm]
 Date: 7/1/2013 2:48:23 PM
 Device: REA MLV-2D (V.1.0.16.0/11923r)
 Serial Number: 0030.025.100-00833-7

Table of codewords

	30	9	0	1	3	7	2	31	3	0	1	0	9	1	30
4	Start	9	0	1	3	7	2	Center	3	0	1	0	9	1	Stop

Histogram:



---, ---
---, --- ---
Comment: ---

Operator: WELCOM
Order number: ---
Aperture: 4 mil, 0.102 mm
Wavelength: 660/45° Q
Lens: Pentax 35mm
Unit: Micrometer[μ m]
Date: 7/1/2013 2:48:23 PM
Device: REA MLV-2D (V.1.0.16.0/11923r)
Serial Number: 0030.025.100-00833-7

Barcode reflectance profile:

